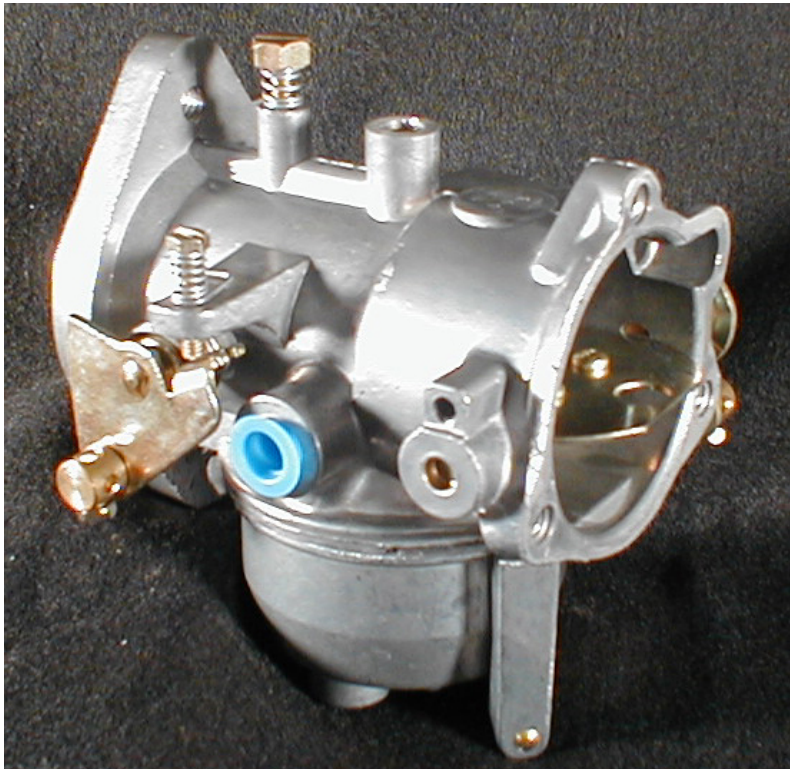




**American Pride
by
Zenith Fuel Systems LLC**



Part # 0-13731

**Standard Finish – 38mm - venturi
Fixed main jet carburetor
Fits all H-D® Sportsters
1974 through 1980 engines
OEM Part # 27155-72B**

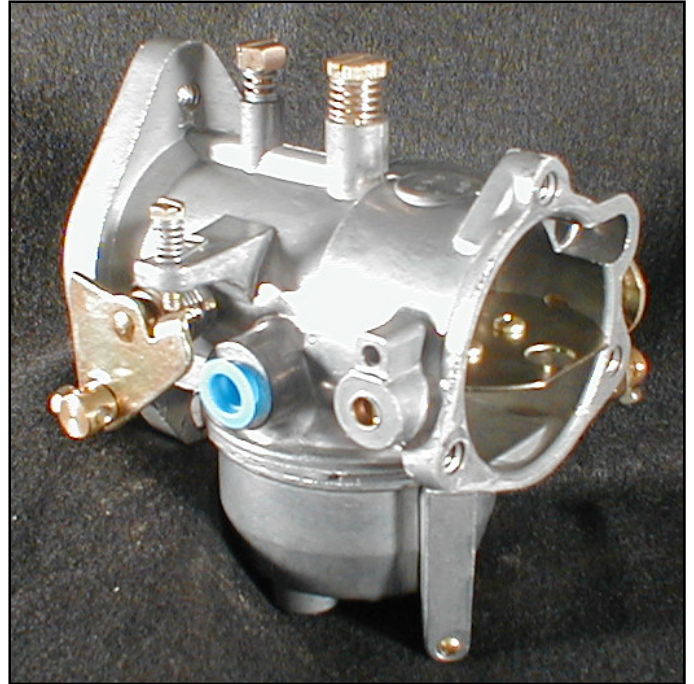
Part # 0-13859

Standard Finish –

38mm - venturi

**Adjustable main jet
carburetor**

**Fits all H-D® Sportsters
1974 thru 1980 engines**



Part # 0-14130

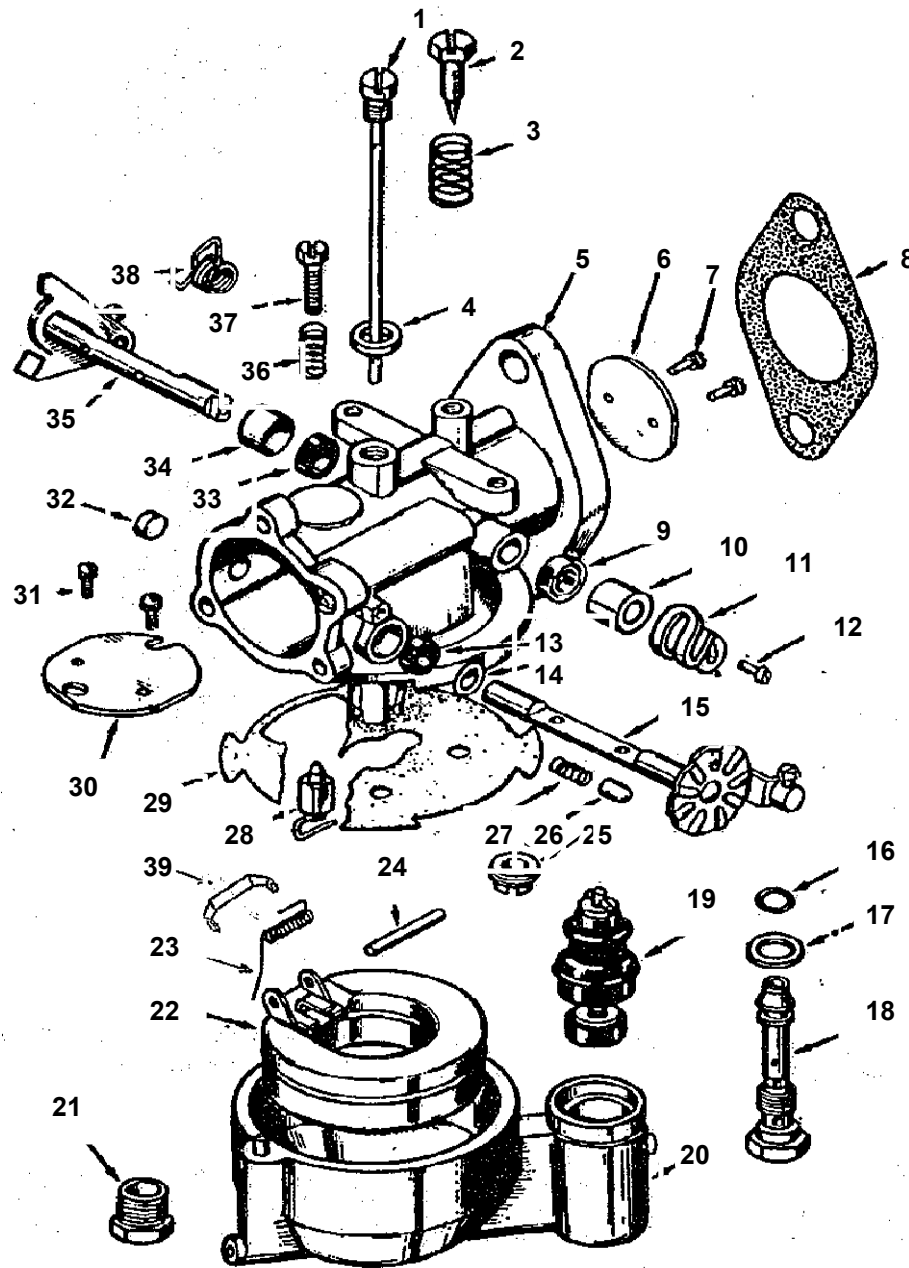
Standard Finish – 40mm venturi

Dual throttle cable carburetor

All year H-D® models with use of proper manifold.

Designed for Evolution® motors

HARLEY DAVIDSON - CARBURETOR



ITEM #	PART DESCRIPTION
1	Idle Tube
2	Idle Adjusting Needle
3	Idle Adjusting Needle Spring
4	Idle Tube Gasket
5	Throttle Body
6	Throttle Body Plate
7	Throttle Plate Screws and Lockwashers
8	Flange Gasket
9	Throttle Shaft Seal
10	Seal Retainer
11	Accelerating Pump Lever
12	Pump Lever Screw
13	Choke Shaft Seal
14	Seal Retainer
15	Choke Shaft and Lever
16	O-Ring
17	Washer
18	Main Jet and Discharge Tube
19	Accelerating Pump
20	Fuel Bowl
21	Plug
22	Float
23	Float Spring
24	Float Axle
25	Check Valve
26	Friction Pin
27	Friction Pin Spring
28	Fuel Needle Valve
29	Bowl to Body Gasket
30	Choke Plate
31	Choke Plate Screws and Lockwashers
32	Choke Shaft Hole Plug
33	Throttle Shaft Seal
34	Seal Retainer
35	Throttle Shaft and Lever
36	Idle Stop Screw Spring
37	Throttle Stop Screw
38	Throttle Return Spring
39	Spring Retainer

Zenith makes a carburetor specially designed for H-D Evolution engines and later Twin Cam models . Harley owners can enjoy maximum performance utilizing their stock manifold and Zenith new spigot mounted throttle-body carburetor.

All Zenith carburetors for Harley Davidson Motorcycles give you easier, quicker starts improving acceleration and are easy to install



New High Performance

- Comes in two finishes: standard or chrome plated.
- Fits 1999 and later H-D Twin Cam models.
- New spigot mount for H-D models 1984 thru 1999 evolution motors.
- Horsepower performance is almost identical to the 42mm carburetors.
- High speed adjustment
- One year warranty.

***American pride
for your American ride.***

ZENITH ★
FUEL SYSTEMS, LLC

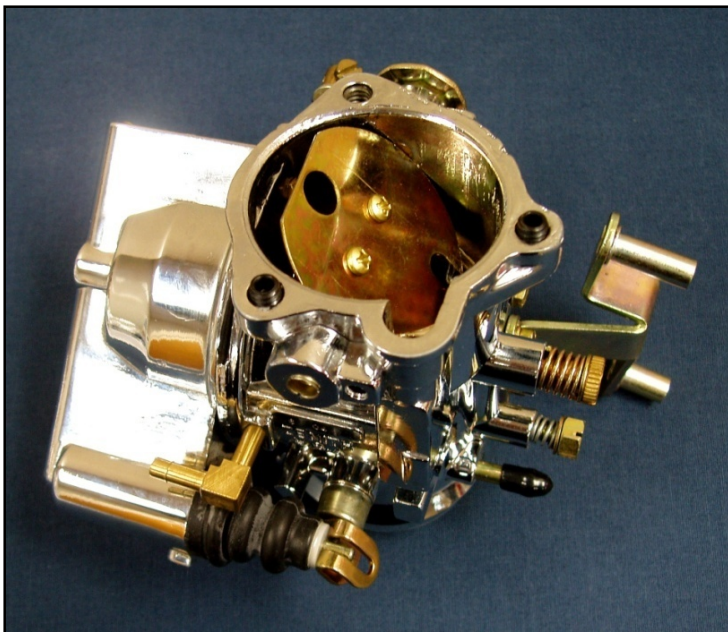
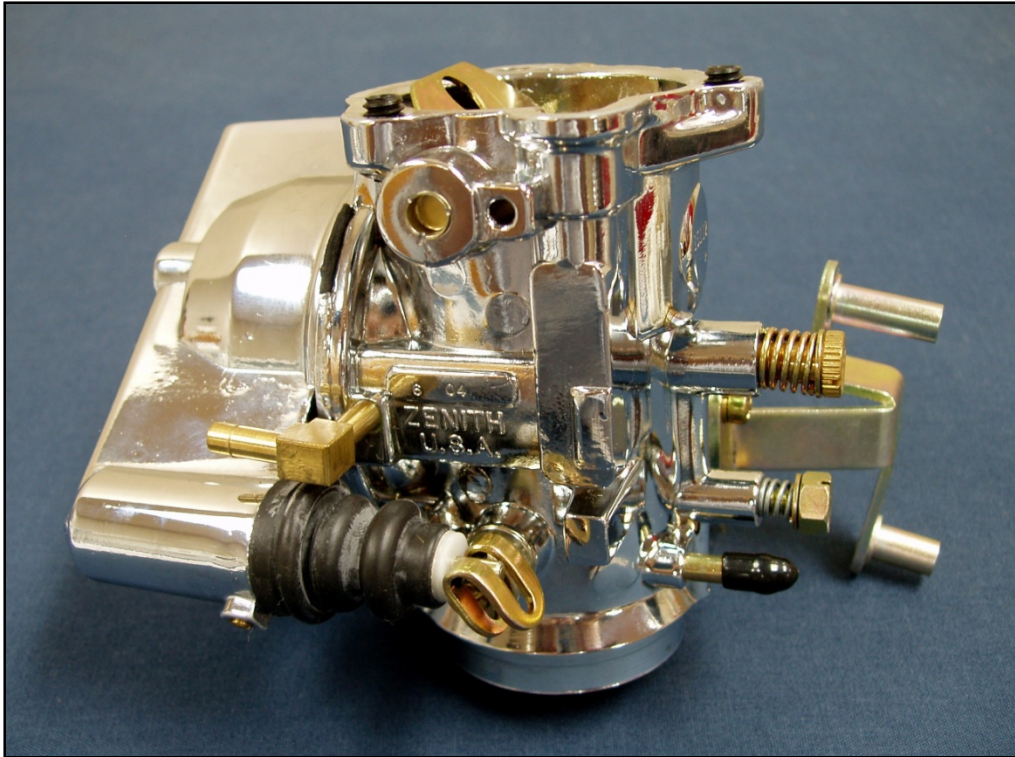
H-D Evolution engines and later Twin Cam models

*40 mm Adjustable Main Jet-Dual Throttle Linkage-Spigot Mount, fits
1984 Evolution Engines & H-D Twin Cam models 1999 and later.*

Two finishes at special promotion price:

Part # 015110 – Standard finish - \$ 179.50

Part # 015112 – Chrome finish - \$ 199.80



ADRENALINE RUSH

*Voted
Best Carburetor*

MADE FOR
HARLEY-DAVIDSON®
MOTORCYCLES

NEW



MADE IN USA

(276) 669-5555

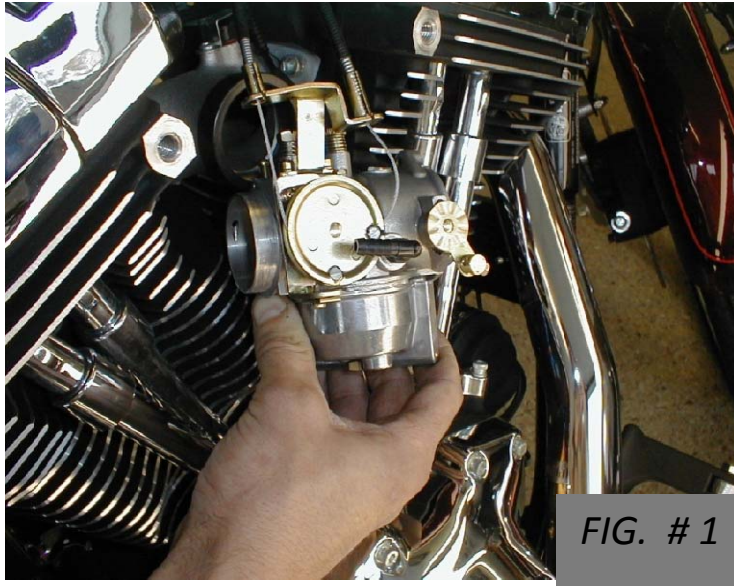
- ◆ For All Evolution And Twin-Cams
- ◆ Adjustments For:
 - Power
 - Economy
 - Altitude
- ◆ More Horsepower
- ◆ Increased Torque
- ◆ Better Response
- ◆ Available In:
 - Chrome
 - Semi Polished

**DEALERSHIPS
AVAILABLE**

ZENITH
FUEL SYSTEMS, LLC.
14570 Industrial Park Road
Bristol, Virginia 24202

ZENITH MOD.16P12 SPIGET MOUNT CARBURETOR - HARLEY DAVIDSON™ BIG TWIN

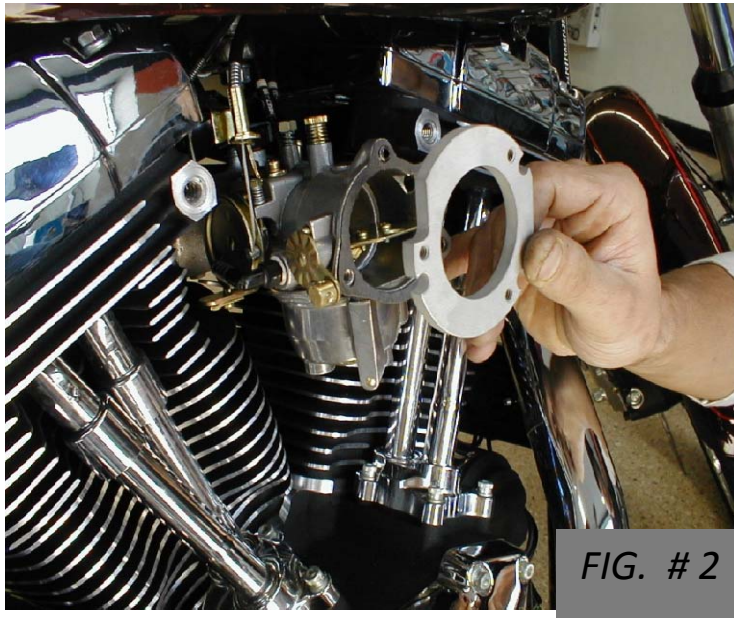
INSTALLATION INSTRUCTIONS



A. BEFORE INSTALLATION OF YOUR NEW ZENITH CARBURETOR, NSPECT THE RUBBER MANIFOLD SEAL FOR NICKS,CRACKS, OR DEBRIS. APPLYING A LIGHT FILM OF PETROLEUM BASED LUBRICANT AROUND THE INSIDE LIP OF THE RUBBER SEAL WILL ALLOW THE CARBURETOR TO SLIP INTO PLACE EASIER.

B. BEFORE ACTUAL INSTALLATION OF UNIT INTO MANIFOLD, THROTTLE CABLES SHOULD BE HOOKED TO THE THROTTLE WHEEL. MAKE SURE THAT THE PULL CABLE IS LOCATED PROPERLY TO OPEN THE THROTTLE PLATE (IN SOME APPLICATIONS THROTTLE CABLE SLACK MAY NEED TO BE ADJUSTED FOR PROPER HOOK-UP AND OPERATION)

SEE FIG. #1



C. AFTER THROTTLE CABLES ARE PROPERLY HOOKED UP,UNIT CAN BE INSERTED INTO MANIFOLD. MAKE SURE THAT UNIT IS FULLY SEATED. WITH CARBURETOR SEATED INTO MANIFOLD AND FUEL LINE HOOKED UP TO FUEL INLET, INSTALL CHOKE CABLE AND HOOK TO CHOKE LEVER. PLACE AIR INTAKE GASKET ON END OF CARBURETOR, NEXT PLACE INTAKE ADAPTOR OVER INTAKE GASKET.

SEE FIG #2



- D. WITH ADAPTOR IN PLACE, LOCATE THE STOCK AIR BOX OVER THE ADAPTOR, UTILIZING THE STOCK AIR BOX GASKET (THERE SHOULD BE NO GAPS BETWEEN ADAPTOR, AIRBOX OR CARBURETOR WHEN PROPERLY INSTALLED) STAND-OFF SPACERS PROVIDED ARE TO BE PLACED BETWEEN AIR BOX & ENGINE HEADS BEFORE INSTALLING THE VENT/RETAINING BOLTS. FOR EVALUATION ENGINES STOCK VENT BOLTS CAN BE USED WITH LARGER I.D. SPACER PROVIDED.

SEE FIG #3

- E. WITH AIR BOX SECURELY IN PLACE, INSTALL THE AIR FILTER COVER RETAINING BRACKET AND FILTER USING THE STOCK BOLTS, AND REPLACE AIR FILTER COVER AND SECURE WITH STOCK BOLT.

SEE FIG #4

- F. AFTER INSTALLATION IS COMPLETE AND FUEL FLOW HAS BEEN RE-ESTABLISHED, CHECK FOR ANY LEAKS BEFORE STARTING ENGINE.
- H. AFTER STARTING ENGINE, SOME ADJUSTMENTS OF IDLE AND MAIN JET MAY BE REQUIRED FOR PROPER OPERATION. AFTER ADJUSTMENTS HAVE BEEN MADE AND WITH ENGINE AT IDLE, TURN WHEEL FULLY TO LEFT AND RIGHT. ANY CHANGE IN IDLE SPEED INDICATES THROTTLE CABLES ARE TOO TIGHT AND MORE SLACK MUST BE PROVIDED.



**THANK YOU FOR YOUR PURCHASE & RIDE SAFELY !
MADE IN U.S.A.**

A LEGEND IN CARBURETORS

The Zenith carburetors, kits and fuel systems components have been the first choice of almost every engine manufacturer for more than 95 years.

Since it was founded in 1911, Zenith Carburetor Company of Detroit, Michigan has been synonymous with quality, technology and leadership.

Today, the company is known as Zenith Fuel Systems LLC, with headquarters and a modern manufacturing facility in Bristol, Virginia, still offers original manufacturing equipment and replacement carburetors and kits.

Zenith is always looking forward to serving its customers with the best variety and good selection of replacement carburetors, parts and kits.

Zenith is also committed to searching for other products that are not included in our regular line of products.

If you have any questions or need additional information, please give us a call or email by contacting:

Mattie Bellamy – (276) 645-8619 or
email: mbellamy@zenithfuelsystems.com